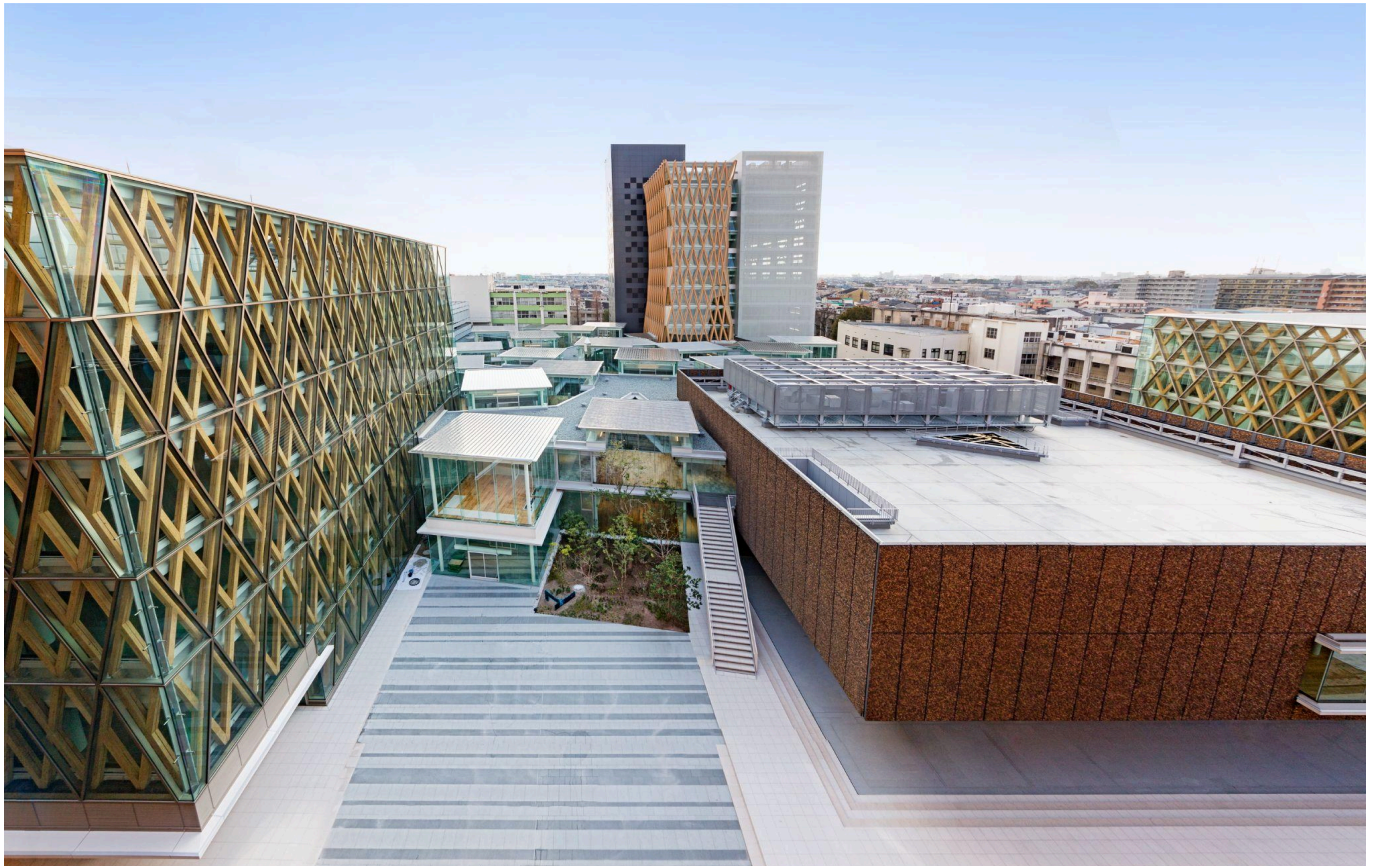


Kindai University Fact Sheet



● GENERAL INFORMATION

Name of Institution	Kindai University		
Official Address	3-4-1 Kowakae, Higashiosaka-shi, Osaka 577-8502	Region	Osaka, Japan
Type (Public or Private)	Private	President	MATSUMURA Itaru
Year Founded	1925	Website	https://www.kindai.ac.jp/english/
Overview	<p>Kindai University was founded in 1925. Now one of Japan's largest universities, it has six campuses in western Japan and boasts research facilities across the nation - from Hokkaido in the north to Kagoshima in the south. Currently, Kindai University comprises 15 faculties with 49 departments, 11 graduate schools and 1 transdisciplinary graduate school, 18 research facilities, two junior colleges, 18 associated primary and secondary schools, and two teaching hospitals. The university has over 30,000 students and more than 550,000 alumni.</p>		
Campuses	<p>Higashiosaka (Main Campus)*, Osaka-Sayama, Nara, Wakayama, Hiroshima, Fukuoka</p> <p><i>*Only Higashiosaka Campus accepts exchange students. Please refer to the faculty list to confirm the study fields that are available for exchange students.</i></p>		
International Relations Office	Name	Global Education Center	
	E-mail	isc@itp.kindai.ac.jp	Tel +81-6-4307-3081
Contact Person	Inbound (to Kindai)	Mr. KAMASAKA Togo	
	Outbound (from Kindai)	Mr. LIU Yutong	

Kindai University Fact Sheet

	Agreement	Ms. KASATANI Hideka
--	-----------	---------------------

● ACADEMICS

Undergraduate Programs	Faculty of Law (J)** Faculty of Economics (J)** Faculty of Business Administration (E/J) Faculty of Science and Engineering (J)** Faculty of Architecture (J)** Faculty of Pharmacy Faculty of Literature, Arts and Cultural Studies (E/J) Faculty of Applied Sociology (J)** Faculty of International Studies (E/J) Faculty of Informatics (J)** Faculty of Agriculture Faculty of Medicine Faculty of Biology-Oriented Science and Technology Faculty of Engineering Faculty of Humanity-Oriented Science and Engineering
Graduate Programs	Graduate School of Law Graduate School of Commerce Graduate School of Economics Graduate School of Science and Engineering Graduate School of Pharmacy Graduate School of Interdisciplinary Human Studies Graduate School of Agriculture Graduate School of Medical Sciences Graduate School of Biology-Oriented Science and Technology Graduate School of Systems Engineering Graduate School of Humanity-Oriented Science and Engineering Transdisciplinary Graduate School of Innovation and Entrepreneurship

**Faculties that open courses for exchange students are shown in bold letters.*

(E= courses in English are available, J = courses in Japanese are available)

***Permission is required to take the course and may not be available.*

● STUDENT AND STAFF STATISTICS

No. of Staff(as of May 2022)	Academic (Full-time)	2,268
*incl. affiliated schools etc.	Academic(Part time)	3,578
	Administrative	3,576

No. of Students (as of May 2022)	Total	International
Undergraduate	34,156	434
Postgraduate	1,288	56

● UNIVERSITY RANKINGS

World University Rankings 2023	801-1000
CWTS Leiden Ranking 2022	841
URAP World University Ranking 2022-2023	920

● PARTNER INSTITUTIONS (As of April 2023)

No. of Partner Institutions	272
-----------------------------	-----

Kindai University Fact Sheet

No. of Countries	52
------------------	----

For the latest information, please visit <https://www.kindai.ac.jp/english/about/sisterschools.html>

Kindai University Fact Sheet

● EXCHANGE PROGRAM

Kindai University provides 2 student exchange programs:
 Program A is to offer courses in English and Program B is in Japanese.

***We do not contact students directly until we receive an official nomination from the partners.**

If there are any questions, please make sure that inquiries are made by the person in charge of the exchange program.

	Program A	Program B
Language of Instruction	English	Japanese
Calendar	Spring Semester (April)	Nomination Deadline: End of September Application Deadline: End of October Result Announcement: End of November - Early December Arrival: End of March Semester Starts: April 1 Semester Ends: Early August (Examination: End of July - Early August) Transcript Issuance: End of August (Official transcript is sent by email.)
	Fall Semester (September)	Nomination Deadline: End of February Application Deadline: End of March Result Announcement: End of April - Early May Arrival: Early September Semester Starts: Middle of September Semester Ends: Early February (Examination: End of January - Early February) Transcript Issuance: End of February (Official transcript is sent by email.)
Program Length	<ul style="list-style-type: none"> 6 months (1 semester) 1 year (2 semesters) 	
Eligibility	<ul style="list-style-type: none"> Those who do not have Japanese nationality Those who will not graduate or complete their degree program at their home institution before the end of the Kindai University exchange program * Please note that graduate students can participate in our program but can register for only undergraduate level courses. * Even if the student will graduate from their home university during the exchange period, we can accept the student who are to go on to postgraduate course of the home university. In this case, the submission of a letter of admission to the graduate school is required. * Exchange students cannot participate in Kindai University club activities(ex: Baseball, Kendo, Sado etc.). 	
Course Information	Students who choose "Program A" can take classes from the list A. [List A] *Exchange students must take more than 7 courses per semester	Students who choose "Program B" can take classes from the list B. [List B] *Exchange students must take more than 7 courses per semester
Academic Requirement	More than 78 in the 100 Point Scale in the "C.G.P.A. Conversion Table" [C.G.P.A. Conversion Table] *If the student does not have more than 78 in the 100 Point Scale, submission of the following document upon application will be required. [Letter of Academic Achievement]	
Language Requirement	TOEFL iBT 61, IELTS 6.0, CEFR B2, Duolingo English Test (DET) 100 or equivalent *Students who cannot submit any English test score must submit the following document upon application. *Those whose native language is English do not need to submit the document. [Letter of Language Competence]	JLPT N2, N1

Kindai University Fact Sheet

Accommodation	All exchange students are required to stay at accommodations that Kindai University arranges. Before arriving, students must pay full rent for one semester. One semester rent will be 240,000~300,000 yen (<u>Payment method is by credit card only</u>). Further information will be announced to applicants.
Estimated Living Expenses (per month)	Housing : 40,000~50,000yen Food : 30,000yen Personal Expenses : 20,000yen ----- Total : 90,000~100,000yen
Visa	All exchange students are required to go through visa issuance procedures at the Japanese embassy or consulate general in the country where students are staying. Instructions on how to apply and the following necessary documents will be sent by email after the submission of application. <ul style="list-style-type: none"> • Certificate of Eligibility (COE) • Kindai University Letter of Acceptance
Insurance	<ul style="list-style-type: none"> • National Health Insurance (kokumin kenko hoken) <p>Foreigners who have received a residence card are required to join the National Health Insurance system. You will have to pay monthly fees, but with this insurance you only need to pay 30% of your medical bills. This insurance is valid throughout Japan, so make sure to bring the card with you on domestic trips. The insurance fee will be about 20,000 ~ 30,000 yen for one semester.</p> <ul style="list-style-type: none"> • Insurance Support Required by Kindai University <p>Comprehensive Student Insurance provides comprehensive coverage for 24 hours and 365 days, including not only accidents occurring during school life, but also private accidents and medical expenses. All exchange students are required to take out this insurance. The insurance premiums are included in the housing payment amount.</p> <p>Also, all exchange students have access to a 24 hours medical consultation service. (Getting overseas travel insurance is recommended to secure the travel abroad. Please complete the purchasing procedure of the travel insurance by yourself.)</p>

〈Supports〉

•Japanese Language Courses

There are Japanese Language Courses (ES Courses, Tokurei Courses) which are designed to help exchange students improve their Japanese language skills.

These courses provide credits.

Japanese placement test will be held after students' arrival, and they will be graded from level 1 (beginner) to 5 (advanced).

•Language Partner Program

All exchange students will get a student volunteer named Language Partner to help with the life in Kindai.

•Orientation Week

The orientation activities are held a week before the academic year begins.

All exchange students are required to attend the orientation activities.

● KINDAI SHORT-TERM JAPANESE PROGRAM

For the latest information, please visit <https://www.kindai.ac.jp/english/study-at-kindai/short-term/>

● ACCESS

Route Map to Kindai University's Main Campus

